

Colour Selector

The Colour Selector contains products that are for use on interior and exterior applications. It includes warrantable products up to 10 years and non-warrantable products.

	 NON-HABITABLE	 RESIDENTIAL ← 4 LEVELS	 RESIDENTIAL → 3 LEVELS	 COMMERCIAL ← 4 LEVELS	 COMMERCIAL → 3 LEVELS	 PRESTIGIOUS COMMERCIAL	 MONUMENTAL
INTERIOR	•	•	•	•	•	•	•
EXTERIOR	•	•					

Dulux World of Colour®
Powder Coat Series
Australian Collection



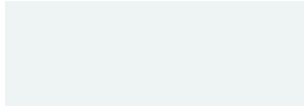
Dulux Powder Coat Colour Selector

DURALLOY[®]
POWDERCOAT RANGE

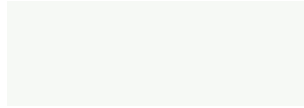


AS 3715
AAMA 2603

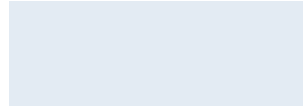
Subtle and neutral solid colours including the Colorbond[®] steel standard colour range delivered with warranty grade* advanced durable polyester thermosetting powder. See product suitability tables for recommended usage.



PEARL WHITE
Gloss 2721114G Gloss 2601229G RC



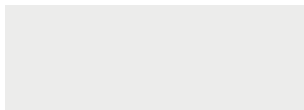
CLASSIC PEARL WHITE
Gloss 27281880 Gloss 2601228G RC



BRIGHT WHITE
Gloss 26084636 RC Gloss 27284636



EVENING HAZE[®] CB
Satin 2723055S Matt 2603168M RC



OYSTER
Matt 26036858 RC Matt 27236858



SURFMIST[®] CB
Satin 2721137S Satin 2601137S RC
Matt 2603167M RC



GREY NURSE
Gloss 26050060 RC



COVE[®] CB
Satin 2606250S RC Matt 2606252M RC



APO GREY
Satin 26032786 RC Satin 27232786



ANOTEC[®] SILVER GREY
Matt 27251272



SHALE GREY[®] CB
Satin 26083246 RC Satin 27283246
Matt 2607557M RC



PALE EUCALYPT[®] CB
Satin 2606127S RC Matt 2606303M RC



WINDSPRAY[®] CB
Satin 2607256S RC Satin 2727256S
Matt 2607559M RC



DUNE[®] CB
Matt 2607558M RC Satin 2723087S
Satin 2603087S RC



WEDGEWOOD
Satin 27250279



WILDERNESS[®] CB
Satin 27284224



OLDE PEWTER
Satin 26050243 RC Satin 27250243



STONE GREY
Satin 26078126 RC Satin 27278126



BLUE RIDGE[®] CB
Satin 27288480



MANGROVE[®] CB
Satin 2606262S RC



NOTRE DAME
Gloss 26036672 RC Gloss 27236672



WALLABY[®] CB
Satin 2607474S RC Matt 2607476M RC



DEEP OCEAN[®] CB
Satin 2605125S RC Satin 2725125S
Matt 2605267M RC



COTTAGE GREEN[®] CB
Satin 26084219 RC Satin 27284219
Matt 2606304M RC



BERRY GREY
Satin 26088362 RC Gloss 2727262G



BASALT[®] CB
Satin 2607473S RC Matt 2607475M RC



CHARCOAL
Satin 26088351 RC Satin 27288351
Gloss 2729086G



CLASSIC HAWTHORN GREEN
Gloss 27233709



IRONSTONE[®] CB
Satin 2607257S RC Satin 2727257S
Matt 2607556M RC



ANOTEC[®] DARK GREY
Matt 2725127S Matt 2607538M RC



BLACK
Gloss 2609132G RC Gloss 2729090G



DEEP BRUNSWICK GREEN
Gloss 2606134G RC Gloss 2726134G

RC RapidCure Technology enables a possible reduction in energy consumption through lower cure temperatures, and or faster line speeds.

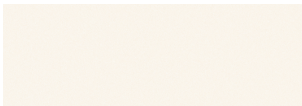



CB Colorbond[®] and the Colorbond colour names are registered trademarks of Bluescope Steel Limited.

			
WHITE Satin 2721139S Satin 2601139S RC	SHOJI WHITE Satin 26084682 Satin 27284682 RC	BARRISTER WHITE Satin 27284672	WHITE BIRCH Gloss 27237131 Gloss 2602057G RC
			
OFF WHITE Satin 2603149S RC Satin 27233732	ANOTEC® OFF WHITE Matt 2602181M RC	MAGNOLIA Gloss 27232658	CANOLA CREAM Gloss 27281796
			
LIGHT GREY Gloss 2727263G	RIVERGUM BEIGE Gloss 27236991	PAPERBARK® Satin 2723088S Satin 2603135S RC Matt 2603174M RC	CLASSIC CREAM® Satin 2602095S RC Satin 2722095S Matt 26084732 RC
			
GULLY® Satin 2608233S RC Matt 2608235M RC	RIVERSAND® Matt 2603193M RC	BARLEY Gloss 2723089G	PRIMROSE Gloss 26084365 RC Gloss 27284365
			
WOODLAND GREY® Satin 2727255S Satin 2606255S RC Matt 2606256M RC	JASPER® Satin 2608122S RC Satin 2728122S Matt 2608252M RC	STONE BEIGE Matt 26032538 RC	DOESKIN Satin 26032516 RC
			
MONUMENT® Satin 2609067S RC Satin 2729067S Matt 2609066M RC	WEATHERED COPPER Matt 27233724	HAMMERSLEY BROWN Satin 26084657 RC	TERRAIN® Satin 2608232S RC Matt 2608234M RC
			
BLACK (C/B NIGHT SKY®) Matt 2609129M RC Matt 27219319	BLACK (C/B NIGHT SKY®) Satin 2609128S RC Satin 27219268	ANOTEC® MID BRONZE Matt 27251014	MANOR RED® Satin 2604134S RC Satin 2724134S Matt 2604292M RC

PRECIOUS® POWDERCOAT RANGE



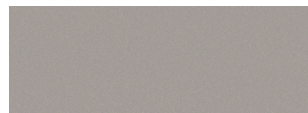
Beautiful decorative pearlescent colours delivered with warranty grade* advanced durable polyester thermosetting powder. See product suitability tables for recommended usage.

			
MOTHER OF PEARL Gloss 97184678	CITI PEARL Matt 97188471	METROPOLIS® SILVER GLOW PEARL Gloss 97184623	NICKEL PEARL Matt 97188360

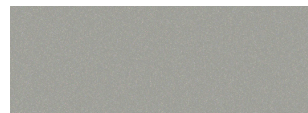
* All Dulux Duralloy® and Precious® products are supported by Dulux Alumi Shield and Dulux Steel Shield warranties when applied by a Dulux Accredited Powder Coater to the warranty specification on recommended project types and conditions. For more information visit duluxpowders.com.au/warranties



NATURAL PEARL
Matt 97189119



SHARP SILVER KINETIC® PEARL
Satin 9717238K



SILVER KINETIC® PEARL
Satin 9717043K



COPPER KINETIC® PEARL
Satin 9717183K



ESSENTIAL SILVER PEARL
Matt 2603146Q RC



ST ELMOS FIRE KINETIC® PEARL
Satin 9717208K



PEWTER PEARL
Satin 97188202



CHAMPAGNE KINETIC® PEARL
Matt 9713059K



PLATYPUS KINETIC® PEARL
Satin 9717214K



TYPHOON PEARL
Satin 2607469Q RC



GUNMETAL KINETIC® PEARL
Satin 9718115K



BRONZE PEARL
Satin 97194686



METROPOLIS® BRONZE PEARL
Satin 97159003



STEEL PEARL
Satin 97157127



ONYX PEARL
Gloss 97152052



CHARCOAL METALLIC PEARL
Gloss 97118796

ALPHATEC®
POWDERCOAT RANGE



Fun, bright solid colours for a big impact delivered with tough polyester thermosetting powder. See product suitability tables for recommended usage.



LEMON YELLOW
Gloss 98432120



SAFETY YELLOW
Gloss 9842015G Gloss 2652162G RC



BLAZE BLUE
Gloss 98419941 Gloss 2655268G RC



BRIGHT SILVER METALLIC
Gloss 96151491



YELLOW GOLD
Gloss 98433617 Gloss 2652188G RC



ORANGE X15
Gloss 98451439 Gloss 2654293G RC



FRENCH BLUE
Gloss 98432725



TRANSFORMER GREY
Gloss 98432186



COPPER PEARL
Satin 9614137Q



SIGNAL RED
Gloss 98450735 Gloss 2654294G RC



POMMEL BLUE
Gloss 98451034



MISTLETOE
Gloss 98451040 Gloss 2656292G RC



ANODIC BRONZE
Satin 96119930



FLAME RED
Gloss 98419959



SPACE BLUE
Gloss 98419990



DARK VIOLET
Gloss 98451926

SURREAL® EFFECTS

MANNEX®



Distinctive and decorative course textured effect finishes delivered with tough polyester thermosetting powder. See product suitability tables for recommended usage.



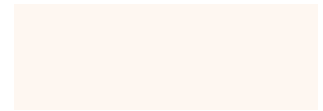
MANNEX® BLACK
90132679



MANNEX® SILVER LODGE PEARL
9017034Z



MANNEX® SUEDE
90137543



MANNEX® WHITE
90133641

SURREAL® EFFECTS

SCYLLA®



An open ripple effect with a sharp gloss finish delivered with tough polyester thermosetting powder. See product suitability tables for recommended usage.



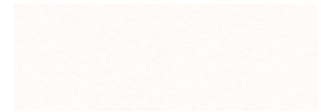
RED BROWN SCYLLA®
90185473



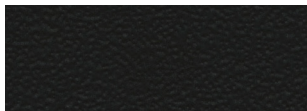
STONE BEIGE SCYLLA®
90185474



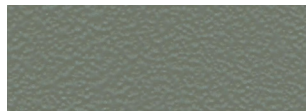
LIGHT GREY SCYLLA®
90150766



HORIZON WHITE SCYLLA®
90151608



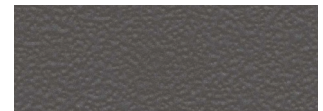
BLACK SCYLLA®
90150003



STORM GREY SCYLLA®
90150183



APO GREY SCYLLA®
90136612



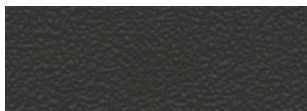
NOTRE DAME SCYLLA®
90150223

SURREAL® EFFECTS

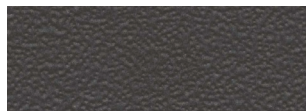
SAROUK®



A range of matt ripple finishes designed for interior only applications delivered with polyester/epoxy thermosetting powder. See product suitability tables for recommended usage.



BLACK SAROUK®
93551146



GRAPHITE SAROUK®
93551677



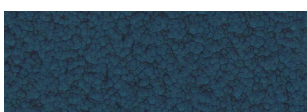
SILVER SAROUK®
93584874

SURREAL® EFFECTS

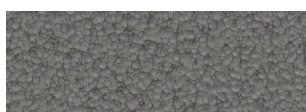
HAMMER®



A heavy undulating profile, with a coloured vein ripple delivered with tough polyester thermosetting powder. See product suitability tables for recommended usage.



BLUE HAMMER®
90185159



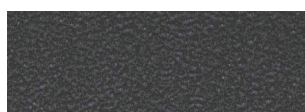
GREY HAMMER®
90185184

SURREAL® EFFECTS

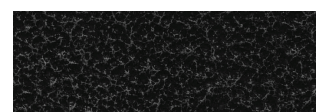
AZTEC®



A heavy undulating profile, with a pearl vein ripple delivered with tough polyester thermosetting powder. See product suitability tables for recommended usage.



AZTEC® BLACK
90182757



AZTEC® SILVER
90185040

Note: Whilst most of the Surreal Effect finishes are suitable for exterior durability, the external use of a profiled effect can lead to accumulation of dirt within the pattern which can reduce film performance, appearance or make cleaning and maintenance difficult.

Product Range

RANGE	COLOUR NAME	FINISH	LOOK	RAPID CURE	COLORBOND®	PRODUCT CODE	R	G	B	LRV
Alphatec	Anodic Bronze	Satin	Bright Solid			96119930	83	74	60	10%
Alphatec	Blaze Blue	Gloss	Bright Solid	RC		2655268G	0	106	178	16%
Alphatec	Blaze Blue	Gloss	Bright Solid			98419941	0	106	178	16%
Alphatec	Bright Silver Metallic	Gloss	Bright Solid			96151491	161	163	164	41%
Alphatec	Copper Pearl	Satin	Bright Solid			9614137Q	147	101	72	20%
Alphatec	Dark Violet	Gloss	Bright Solid			98451926	81	58	112	9%
Alphatec	Flame Red	Gloss	Bright Solid			98419959	152	41	44	11%
Alphatec	French Blue	Gloss	Bright Solid			98432725	46	83	161	13%
Alphatec	Lemon Yellow	Gloss	Bright Solid			98432120	241	214	80	70%
Alphatec	Mistletoe	Gloss	Bright Solid	RC		2656292G	13	105	56	14%
Alphatec	Mistletoe	Gloss	Bright Solid			98451040	13	105	56	14%
Alphatec	Orange X15	Gloss	Bright Solid	RC		2654293G	226	103	42	30%
Alphatec	Orange X15	Gloss	Bright Solid			98451439	226	103	42	30%
Alphatec	Pommel Blue	Gloss	Bright Solid			98451034	31	78	129	10%
Alphatec	Safety Yellow	Gloss	Bright Solid	RC		2652162G	241	161	33	48%
Alphatec	Safety Yellow	Gloss	Bright Solid			9842015G	241	161	33	48%
Alphatec	Signal Red	Gloss	Bright Solid	RC		2654294G	174	55	44	15%
Alphatec	Signal Red	Gloss	Bright Solid			98450735	174	55	44	15%
Alphatec	Space Blue	Gloss	Bright Solid			98419990	44	57	114	7%
Alphatec	Transformer Grey	Gloss	Bright Solid			98432186	125	138	133	29%
Alphatec	Yellow Gold	Gloss	Bright Solid	RC		2652188G	246	167	19	51%
Alphatec	Yellow Gold	Gloss	Bright Solid			98433617	246	167	19	51%
Duralloy	Anotec® Dark Grey	Matt	Solid	RC		2607538M	58	65	69	8%
Duralloy	Anotec® Dark Grey	Matt	Solid			27251275	58	65	69	8%
Duralloy	Anotec® Mid Bronze	Matt	Solid			27251014	66	57	51	7%
Duralloy	Anotec® Off White	Matt	Solid	RC		2602181M	225	218	199	73%
Duralloy	Anotec® Silver Grey	Matt	Solid			27251272	175	176	176	48%
Duralloy	APO Grey	Satin	Solid	RC		26032786	172	173	172	46%
Duralloy	APO Grey	Satin	Solid			27232786	172	173	172	46%
Duralloy	Barley	Gloss	Solid			2723089G	215	200	179	63%
Duralloy	Barrister White	Satin	Solid			27284672	235	225	206	78%
Duralloy	Basalt®	Matt	Solid	RC	CB	2607475M	91	93	93	15%
Duralloy	Basalt®	Satin	Solid	RC	CB	2607473S	91	93	93	15%
Duralloy	Berry Grey	Satin	Solid	RC		26088362	79	82	87	12%
Duralloy	Berry Grey	Gloss	Solid			2727262G	79	82	87	12%
Duralloy	Black	Gloss	Solid	RC		2609132G	45	46	46	5%
Duralloy	Black	Gloss	Solid			2729090G	45	46	46	5%
Duralloy	Black (C/B Night Sky®)	Matt	Solid	RC	CB	2609129M	42	43	43	4%
Duralloy	Black (C/B Night Sky®)	Satin	Solid	RC	CB	2609128S	42	43	43	4%
Duralloy	Black (C/B Night Sky®)	Matt	Solid		CB	27219319	42	43	43	4%
Duralloy	Black (C/B Night Sky®)	Satin	Solid		CB	27219268	42	43	43	4%
Duralloy	Blue Ridge®	Satin	Solid		CB	27288480	75	93	105	14%
Duralloy	Bright White	Gloss	Solid	RC		26084636	225	233	240	82%
Duralloy	Bright White	Gloss	Solid			27284636	225	233	240	82%
Duralloy	Canola Cream	Gloss	Solid			27281796	243	231	200	82%
Duralloy	Charcoal	Satin	Solid	RC		26088351	55	59	62	7%
Duralloy	Charcoal	Gloss	Solid			2729086G	55	59	62	7%
Duralloy	Charcoal	Satin	Solid			27288351	55	59	62	7%
Duralloy	Classic Cream®	Matt	Solid	RC	CB	26084732	227	210	176	69%
Duralloy	Classic Cream®	Satin	Solid	RC	CB	2602095S	227	210	176	69%
Duralloy	Classic Cream®	Satin	Solid		CB	2722095S	227	210	176	69%
Duralloy	Classic Hawthorn Green	Gloss	Solid			27233709	45	67	56	7%
Duralloy	Classic Pearl White	Gloss	Solid	RC		2601228G	242	245	241	91%
Duralloy	Classic Pearl White	Gloss	Solid			27281880	242	245	241	91%
Duralloy	Cottage Green®	Matt	Solid	RC	CB	2606304M	54	80	69	10%
Duralloy	Cottage Green®	Satin	Solid	RC	CB	26084219	54	80	69	10%
Duralloy	Cottage Green®	Satin	Solid		CB	27284219	54	80	69	10%
Duralloy	Cove®	Matt	Solid	RC	CB	2606252M	144	136	111	30%
Duralloy	Cove®	Satin	Solid	RC	CB	2606250S	144	136	111	30%
Duralloy	Deep Brunswick Green	Gloss	Solid	RC		2606134G	47	61	54	7%
Duralloy	Deep Brunswick Green	Gloss	Solid			2726134G	47	61	54	7%
Duralloy	Deep Ocean®	Matt	Solid	RC	CB	2605267M	61	73	84	9%
Duralloy	Deep Ocean®	Satin	Solid	RC	CB	2605125S	61	73	84	9%
Duralloy	Deep Ocean®	Satin	Solid		CB	2725125S	61	73	84	9%
Duralloy	Doeskin	Satin	Solid	RC		26032516	195	170	128	47%
Duralloy	Dune®	Matt	Solid	RC	CB	2607558M	170	163	152	42%
Duralloy	Dune®	Satin	Solid	RC	CB	2603087S	170	163	152	42%
Duralloy	Dune®	Satin	Solid		CB	2723087S	170	163	152	42%
Duralloy	Evening Haze®	Matt	Solid	RC	CB	2603168M	188	183	163	51%
Duralloy	Evening Haze®	Satin	Solid		CB	2723055S	188	183	163	51%
Duralloy	Grey Nurse	Gloss	Solid	RC		26050060	190	185	165	53%
Duralloy	Gully®	Matt	Solid	RC	CB	2608235M	117	111	100	20%
Duralloy	Gully®	Satin	Solid	RC	CB	2608233S	117	111	100	20%
Duralloy	Hammersley Brown	Satin	Solid	RC		26084657	72	60	57	8%
Duralloy	Ironstone®	Matt	Solid	RC	CB	2607556M	74	78	85	11%
Duralloy	Ironstone®	Satin	Solid	RC	CB	2607257S	74	78	85	11%
Duralloy	Ironstone®	Satin	Solid		CB	2727257S	74	78	85	11%
Duralloy	Jasper®	Matt	Solid	RC	CB	2608252M	103	92	81	15%
Duralloy	Jasper®	Satin	Solid	RC	CB	2608122S	103	92	81	15%
Duralloy	Jasper®	Satin	Solid		CB	2728122S	103	92	81	15%
Duralloy	Light Grey	Gloss	Solid			2727263G	197	190	173	56%
Duralloy	Magnolia	Gloss	Solid			27232658	219	206	178	66%
Duralloy	Mangrove®	Satin	Solid	RC	CB	2606262S	100	101	84	17%
Duralloy	Manor Red®	Matt	Solid	RC	CB	2604292M	105	56	50	9%
Duralloy	Manor Red®	Satin	Solid	RC	CB	2604134S	105	56	50	9%
Duralloy	Manor Red®	Satin	Solid		CB	2724134S	105	56	50	9%

RANGE	COLOUR NAME	FINISH	LOOK	RAPID CURE	COLORBOND®	PRODUCT CODE	R	G	B	LRV
Duralloy	Monument®	Matt	Solid	RC	CB	2609066M	66	67	67	9%
Duralloy	Monument®	Satin	Solid	RC	CB	2609067S	66	67	67	9%
Duralloy	Monument®	Satin	Solid		CB	2729067S	66	67	67	9%
Duralloy	Notre Dame	Gloss	Solid	RC		26036672	94	98	101	16%
Duralloy	Notre Dame	Gloss	Solid			27236672	94	98	101	16%
Duralloy	Off White	Satin	Solid	RC		2603149S	217	217	205	72%
Duralloy	Off White	Satin	Solid			27233732	217	217	205	72%
Duralloy	Olde Pewter	Satin	Solid	RC		26050243	106	109	112	19%
Duralloy	Olde Pewter	Satin	Solid			27250243	106	109	112	19%
Duralloy	Oyster	Matt	Solid	RC		26036858	190	192	185	56%
Duralloy	Oyster	Matt	Solid			27236858	190	192	185	56%
Duralloy	Pale Eucalypt®	Matt	Solid	RC	CB	2606303M	120	129	106	25%
Duralloy	Pale Eucalypt®	Satin	Solid	RC	CB	2606127S	120	129	106	25%
Duralloy	Paperbark®	Matt	Solid	RC	CB	2603174M	194	177	152	50%
Duralloy	Paperbark®	Satin	Solid	RC	CB	2603135S	194	177	152	50%
Duralloy	Paperbark®	Satin	Solid		CB	2723088S	194	177	152	50%
Duralloy	Pearl White	Gloss	Solid	RC		2601229G	239	243	242	90%
Duralloy	Pearl White	Gloss	Solid			2721114G	239	243	242	90%
Duralloy	Primrose	Gloss	Solid	RC		26084365	237	219	181	75%
Duralloy	Primrose	Gloss	Solid			27284365	237	219	181	75%
Duralloy	Rivergum Beige	Gloss	Solid			27236991	217	206	190	66%
Duralloy	Riversand®	Matt	Solid	RC	CB	2603193M	159	142	125	33%
Duralloy	Shale Grey®	Matt	Solid	RC	CB	2607557M	179	181	175	50%
Duralloy	Shale Grey®	Satin	Solid	RC	CB	26083246	179	181	175	50%
Duralloy	Shale Grey®	Satin	Solid		CB	27283246	179	181	175	50%
Duralloy	Shoji White	Satin	Solid	RC		26084682	226	221	212	76%
Duralloy	Shoji White	Satin	Solid			27284682	226	221	212	76%
Duralloy	Stone Beige	Matt	Solid	RC		26032538	194	170	141	47%
Duralloy	Stone Grey	Satin	Solid	RC		26078126	144	142	138	32%
Duralloy	Stone Grey	Satin	Solid			27278126	144	142	138	32%
Duralloy	Surfmist®	Matt	Solid	RC	CB	2603167M	213	213	205	69%
Duralloy	Surfmist®	Satin	Solid	RC	CB	2601137S	213	213	205	69%
Duralloy	Surfmist®	Satin	Solid		CB	2721137S	213	213	205	69%
Duralloy	Terrain®	Matt	Solid	RC	CB	2608234M	100	65	51	10%
Duralloy	Terrain®	Satin	Solid	RC	CB	2608232S	100	65	51	10%
Duralloy	Wallaby®	Matt	Solid	RC	CB	2607476M	109	107	103	19%
Duralloy	Wallaby®	Satin	Solid	RC	CB	2607474S	109	107	103	19%
Duralloy	Weathered Copper	Matt	Solid			27233724	81	73	63	10%
Duralloy	Wedgewood	Satin	Solid			27250279	90	121	144	23%
Duralloy	White	Satin	Solid	RC		2601139S	243	245	241	92%
Duralloy	White	Satin	Solid			2721139S	243	245	241	92%
Duralloy	White Birch	Gloss	Solid	RC		2602057G	249	236	214	87%
Duralloy	White Birch	Gloss	Solid			27237131	245	236	216	86%
Duralloy	Wilderness®	Satin	Solid		CB	27284224	98	112	98	19%
Duralloy	Windspray®	Matt	Solid	RC	CB	2607559M	126	132	129	27%
Duralloy	Windspray®	Satin	Solid	RC	CB	2607256S	126	132	129	27%
Duralloy	Windspray®	Satin	Solid		CB	2727256S	126	132	129	27%
Duralloy	Woodland Grey®	Matt	Solid	RC	CB	2606256M	82	82	77	12%
Duralloy	Woodland Grey®	Satin	Solid	RC	CB	2606255S	82	82	77	12%
Duralloy	Woodland Grey®	Satin	Solid		CB	2727255S	82	82	77	12%
Precious	Bronze Pearl	Satin	Pearlescent			97194686	73	63	51	8%
Precious	Champagne Kinetic® Pearl	Matt	Pearlescent			9713059K	140	132	120	28%
Precious	Charcoal Metallic Pearl	Gloss	Pearlescent			97118796	64	64	65	8%
Precious	Citi Pearl	Matt	Pearlescent			97188471	166	171	174	45%
Precious	Copper Kinetic® Pearl	Satin	Pearlescent			9717183K	136	128	117	27%
Precious	Essential Silver Pearl	Matt	Pearlescent	RC		2603146Q	161	162	158	41%
Precious	Gunmetal Kinetic® Pearl	Satin	Pearlescent			9718115K	86	85	81	13%
Precious	Metropolis® Bronze Pearl	Satin	Pearlescent			97159003	74	71	69	10%
Precious	Metropolis® Silver Glow Pearl	Gloss	Pearlescent			97184623	165	171	174	45%
Precious	Mother Of Pearl	Gloss	Pearlescent			97184678	228	223	214	77%
Precious	Natural Pearl	Matt	Pearlescent			97189119	161	162	158	41%
Precious	Nickel Pearl	Matt	Pearlescent			97188360	169	160	146	40%
Precious	Onyx Pearl	Gloss	Pearlescent			97152052	61	62	64	8%
Precious	Pewter Pearl	Satin	Pearlescent			97188202	121	125	125	25%
Precious	Platypus Kinetic® Pearl	Satin	Pearlescent			9717214K	161	158	152	39%
Precious	Sharp Silver Kinetic® Pearl	Satin	Pearlescent			9717238K	159	162	162	41%
Precious	Silver Kinetic® Pearl	Satin	Pearlescent			9717043K	150	154	153	37%
Precious	St Elmos Fire Kinetic® Pearl	Satin	Pearlescent			9717208K	144	146	147	33%
Precious	Steel Pearl	Satin	Pearlescent			97157127	87	92	93	14%
Precious	Typhoon Pearl	Satin	Pearlescent	RC		2607469Q	89	90	87	14%
Surreal Effects Aztec	Aztec Black	Effect	Pearl Vein Ripple			90182757	82	86	89	13%
Surreal Effects Aztec	Aztec Silver	Effect	Pearl Vein Ripple			90185040	77	81	83	11%
Surreal Effects Hammer	Blue Hammer	Effect	Colour Vein Ripple			90185159	41	74	98	9%
Surreal Effects Hammer	Grey Hammer	Effect	Colour Vein Ripple			90185184	110	113	115	21%
Surreal Effects Mannex	Mannex Black	Effect	Textured			90132679	45	46	47	5%
Surreal Effects Mannex	Mannex Silver Lode Pearl	Effect	Textured			9017034Z	156	158	154	39%
Surreal Effects Mannex	Mannex Suede	Effect	Textured			90137543	196	191	181	57%
Surreal Effects Mannex	Mannex White	Effect	Textured			90133641	240	242	237	90%
Surreal Effects Sarouk	Black Sarouk	Effect	Matt Ripple			93551146	50	51	52	5%
Surreal Effects Sarouk	Graphite Sarouk	Effect	Matt Ripple			93551677	84	84	84	12%
Surreal Effects Sarouk	Silver Sarouk	Effect	Matt Ripple			93584874	144	145	144	33%
Surreal Effects Scylla	APO Grey Scylla	Effect	Ripple			90136612	172	173	172	46%
Surreal Effects Scylla	Black Scylla	Effect	Ripple			90150003	48	48	49	5%
Surreal Effects Scylla	Horizon White Scylla	Effect	Ripple			90151608	239	238	229	86%
Surreal Effects Scylla	Light Grey Scylla	Effect	Ripple			90150766	193	186	165	53%
Surreal Effects Scylla	Notre Dame Scylla	Effect	Ripple			90150223	92	96	99	15%
Surreal Effects Scylla	Red Brown Scylla	Effect	Ripple			90185473	73	61	59	8%
Surreal Effects Scylla	Stone Beige Scylla	Effect	Ripple			90185474	197	178	155	50%
Surreal Effects Scylla	Storm Grey Scylla	Effect	Ripple			90150183	124	137	131	28%

Worth doing, worth Dulux.®

Meeting Project Needs

The following tables can be used to help identify your project and environment needs, and ultimately the product choice you have from this card.

Product Suitability – Aluminum

Project Type	Environment	Conditions	Duralloy ²	Precious ²	Alphatec	Surreal Effects Mannex	Surreal Effects Sarouk ¹	Surreal Effects Scylla	Surreal Effects Hammer	Surreal Effects Aztec
Residential (<4 Levels)	Exterior	Mild	●	●						
Non-Habitable	Exterior	Mild	●	●	○	○	○	○	○	○
All Projects	Interior	General Interior	●	●	○	○	○	○	○	○

● Alumi Shield Warranty. ○ Non-warrantable. 1. Surreal Effects Sarouk is interior only.

2. Duralloy and Precious are only suitable for coastal environments >100m from the high tide line and are NOT suitable in strongly acidic environments so PH must be >5.

- Non-Habitable projects are those that are not dwelling types. Examples can be furniture, bus shelters, statues, signage etc.
- Residential properties (BCA Class 1 & 10) are typically easy to maintain, given their height and access.
- All projects can include monumental, prestigious commercial, commercial and residential of all types (levels).

Product Suitability – Steel

		Corrosion Category		Primer System	Top Coat Choice							
AS4312 & ISO 12944	Description of Environment	Mild Steel Corrosion Rate (Microns Per Year) ¹	Example Environment	Zinc-shield	Duralloy ³	Precious ³	Alphatec	Surreal Effects Mannex	Surreal Effects Sarouk ²	Surreal Effects Scylla	Surreal Effects Hammer	Surreal Effects Aztec
C1	Very Low	<1.3	Interior: Dry indoors	●	●	●	○	○	○	○	○	○
C2	Low	1.3-25	Exterior: Arid, urban, inland Interior: Minor condensation	●	●	●	○	○	○	○	○	○
C3	Medium	25-50	Exterior: Coastal or industrial Interior: High moisture	●	●	●	○	○	○	○	○	○

● Steel Shield Warranty. ○ Non-warrantable. 1. Corrosion rate is for uncoated steel. 2. Surreal Effects Sarouk is interior only.

3. Duralloy and Precious are only suitable for coastal environments >100m from the high tide line and are NOT suitable in strongly acidic environments so PH must be >5.

- Substrates include Mild Steel, Bright/Semi Bright Steel, Black Steel and Blue Steel.
- Please refer to a Dulux Duspec Specification for exact specification details.

For more information visit duluxpowders.com.au/specifications

Warranted Performance

All Dulux Duralloy and Precious powder coat products are backed by product specific warranties.

	Warranty	Duralloy	Precious
Alumi Shield Warranty	Aluminium Durability	10 Years	10 Years
	Aluminium Colour	10 Years	10 Years
Steel Shield Warranty	Steel Corrosion	Up to 10 Years	Up to 10 Years
	Steel Colour	10 Years	10 Years

Warranties are made up of a colour warranty (for colour fade and chalking), durability warranty (film integrity for aluminium only), and corrosion warranty (for steel only). They are only valid when applied by a Dulux Accredited Powder Coater to the warranty specification on recommended project types and conditions.

For more information visit duluxpowders.com.au/warranties

Dulux Accredited Powder Coaters

Only Dulux Accredited Powder Coaters are able to issue our Dulux Alumi Shield and Steel Shield warranties after demonstrating their capability to meet stringent quality conditions and international standards.



For more information visit duluxpowders.com.au/accredited

Custom Colour

This colour card and our Premium Colour Selector offer a range of products and colours that are readily available. If you cannot find the colour you require in a particular product, Dulux offer a Custom colour service. Call 13 24 99 or visit duluxpowders.com.au

Advice Line

Our dedicated consultants can help simplify the specification process, saving you time and money by providing the right coating advice for your project. Call 13 24 99 or visit duluxpowders.com.au

Offices

Australia

Dulux Powder & Industrial Coatings
1-15 Pound Road West, Dandenong South VIC 3175
T (61) 3 8787 4500 F (61) 3 8787 4542

New Zealand

Dulux Powder & Industrial Coatings
31B Hillside Road, Glenfield, Auckland, New Zealand
T (64) 9 441 8244 F (64) 9 441 8242

Singapore

DGL International Powder & Industrial Coatings
BLK 265, #02-275, Serangoon Central Drive
T (65) 68381010 F (65) 6733 5125



China

DGL Camel Powder Coatings
No.11 Changtang Road, Yantian District
Fenggang, Dongguan, Guangdong, China, PC 523701
T (86) 769 8680 1088 F (86) 769 8680 1092/8756 9339

Dulux, Duralloy, Precious, Alphatec, Anotec, Surreal Effects, Worth doing, worth Dulux and Dulux World of Colour are registered trade marks and Custom Colour, Rapidcure, Alumi Shield, Steel Shield and Dulux Accredited Powder Coaters are trade marks of DuluxGroup (Australia) Pty Ltd. Colorbond Steel and the Colorbond Steel colour names denoted by the ® symbol are registered trade marks of Bluescope Steel Ltd. Product colours displayed in this guide are indicative only. They have been matched to indoor viewing and are as close to the actual product colours as modern printing techniques allow. Colour appearance may vary according to light source. Always confirm your colour choice with production line prepared samples for final colour approval. Over time the durability performance between Colorbond Steel and Dulux Powder Coating products may vary. Copyright 2017 DuluxGroup (Australia) Pty Ltd.

Premium Colour Selector

The Premium Colour Selector contains products that are for use on interior and exterior applications. It includes warrantable products up to 35 years durability.

	 NON-HABITABLE	 RESIDENTIAL <4 LEVELS	 RESIDENTIAL >3 LEVELS	 COMMERCIAL <4 LEVELS	 COMMERCIAL >3 LEVELS	 PRESTIGIOUS COMMERCIAL	 MONUMENTAL
INTERIOR	•	•	•	•	•	•	•
EXTERIOR	•	•	•	•	•	•	•

Dulux World of Colour®
 Powder Coat Series
 Australian Collection



Dulux Powder Coat Premium Colour Selector

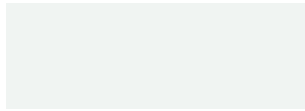
DURATEC[®]
ZEUS[®]



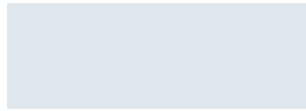
Subtle and neutral solid colours delivered with warranty grade* advanced super durable polyester thermosetting powder. See product suitability tables for recommended usage.



APPLIANCE WHITE
Satin 90Z1341S



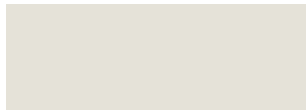
WHITE
Gloss 90Z1110G



ARCTIC WHITE
Satin 90Z1342S



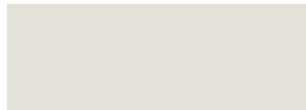
CHALK USA
Gloss 90Z1343G



TALC
Satin 90Z1344S



MATT CANVAS CLOTH
Matt 90Z7327M



LUNAR GREY
Matt 90Z7769M



SILVER GREY
Matt 90Z7770M



GREY
Satin 90Z7768S



TIMBERLAND
Satin 90Z7315S



MONUMENT[®] CB
Matt 90Z8189M



MONUMENT[®] CB
Satin 90Z7307S



DARK GREY
Matt 90Z7767M



CHARCOAL
Satin 90Z7766S



LUNAR ECLIPSE
Satin 90Z9203S

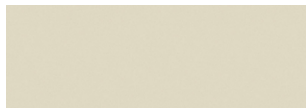


BLACK
Matt 90Z9202M

DURATEC
ELEMENTS[®]



Distinctive, robust mar-resistant textured finishes built to withstand the elements delivered with warranty grade* advanced super durable polyester thermosetting powder. See product suitability tables for recommended usage.



SURFMIST[®] CB
Flat 90E1330Z



BASALT[®] CB
Flat 90E7723Z



MONUMENT[®] CB
Flat 90E7724Z



BLACK (CB NIGHT SKY[®]) CB
Flat 90E9190Z



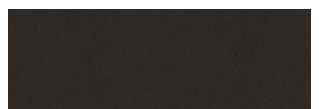
NATURAL BRONZE
Flat 90E8341Z



WEATHERED STEEL
Flat 90E8340Z



COPPER ORE
Flat 90E6413Z



MAGNETITE
Flat 90E7725Z

DURATEC[®] ETERNITY[®]



- ✓ AS 3715
- ✓ AAMA 2603
- ✓ AAMA 2604

Beautiful decorative pearlescent colours delivered with warranty grade* advanced super durable polyester thermosetting powder. See product suitability tables for recommended usage.



LINEN PEARL
Satin 90T1138Q



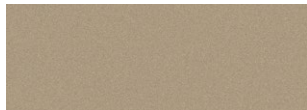
CITI SILVER PEARL
Matt 90T7024Q



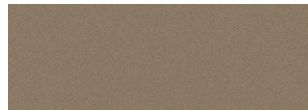
CHAIN PEARL
Matt 90T7761Q



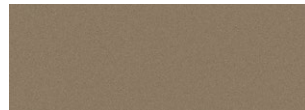
SILVER KINETIC PEARL
Satin 90T7160K



NICKEL PEARL
Matt 90T7763Q



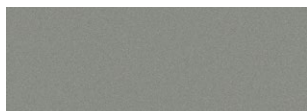
COPPER METALLIC KINETIC
Matt 90T7183K



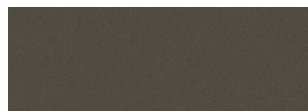
MATT CHAMPAGNE KINETIC
Matt 90T3059K



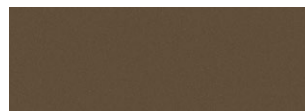
COPPER COIN PEARL
Matt 90T4350Q



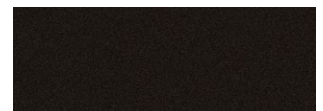
PEWTER PEARL
Satin 90T7764Q



TITANIUM PEARL
Satin 90T7765Q



BRONZE PEARL
Satin 90T8356Q



CHARCOAL PEARL
Satin 90T7762Q

DURATEC[®] INTENSITY[®]



- ✓ AS 3715
- ✓ AAMA 2603
- ✓ AAMA 2604

Fun, bright solid colours for a big impact delivered with warranty grade* advanced super durable polyester thermosetting powder. See product suitability tables for recommended usage.



MOONLIGHT
Satin 90N2004S



SUNSHINE
Gloss 90N2084G



FLAME
Gloss 90N4007G



DESERT
Satin 90N4227S



LEAF
Satin 90N6167S



REEF
Gloss 90N5011G



COAST
Satin 90N5233S



STORM
Satin 90N5365S



EVERGREEN
Satin 90N6005S

* All Dulux Duratec products are supported by Dulux Alumi Shield and Dulux Steel Shield warranties when applied by a Dulux Accredited Powder Coater to the warranty specification on recommended project types and conditions. For more information visit duluxpowders.com.au/warranties

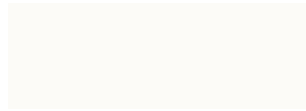
ELECTRO[®]

POWDERCOAT RANGE



A unique anodised look, designed to subtly change in appearance as light conditions alter in the day delivered with warranty grade* advanced super durable polyester thermosetting powder. See product suitability tables for recommended usage.

MODERN



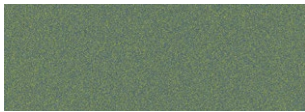
FLAT WHITE
Flat 9061200F



GOLD PEARL
Flat 9062221K



VENERABLE SILVER
Flat 9067621K



BLUE GOLD
Flat 9065301K



BRILLIANCE
Flat 9068281K



BURNISHED COPPER
Flat 9068185K

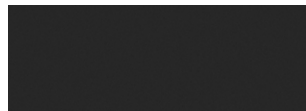


TIBERIUS
Flat 9062210K



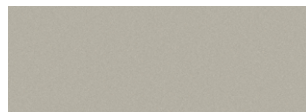
MONUMENT[®]
Flat 9069171F

CB

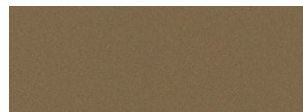


BLUE NIGHT
Flat 9065303K

TRADITIONAL



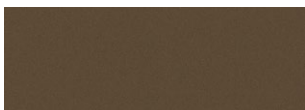
SILVER REIGN
Flat 9067614K



SENSATIONAL CHAMPAGNE
Flat 9063187K



FRESH GOLD
Flat 9062208K

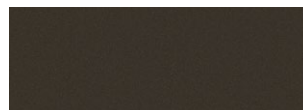


MEDIUM BRONZE
Flat 9068183K



BASALT
Flat 9067645F

CB



DARK BRONZE
Flat 9068184K

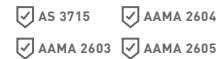


BLACK ACE
Flat 9069116F

CB Colorbond[®] and the Colorbond colour names are registered trademarks of BlueScope Steel Limited.

* All Dulux Electro products are supported by Dulux Alumi Shield and Dulux Steel Shield warranties when applied by a Dulux Accredited Powder Coater to the warranty specification on recommended project types and conditions. For more information visit duluxpowders.com.au/warranties

FLUOROSET[®] XTREME™



Subtle and neutral solid colours delivered with warranty grade* advanced ultra durable fluoropolymer thermosetting powder. See product suitability tables for recommended usage.

ULTRA DURABLE SOLID LOOK



WHITE
Satin 40X1157S



SURFMIST
Satin 40X1182S



BASALT
Matt 40X7475M



MONUMENT
Matt 40X8148M

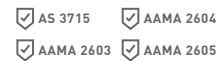


CHARCOAL
Matt 40X7297M



BLACK
Matt 40X9204M

FLUOROSET[®] ALLURE™



Subtle and neutral pearlescent colours delivered with warranty grade* advanced ultra durable fluoropolymer thermosetting powder. See product suitability tables for recommended usage.

ULTRA DURABLE PEARLESCENT LOOK



COIN
Satin 40A7289Q



SILVER
Satin 40A7273Q



CHAMPAGNE
Satin 40A7302Q

Specification Check List

Make sure your specification is clear and contains:

- ✓ The project type and environmental conditions.
- ✓ The most appropriate AAMA specification.
- ✓ Suitable product range.
- ✓ Colour name.
- ✓ Warranty details.
- ✓ Accredited Powder Coater specification to ensure a warranty can be issued.

For example:

“Duratec Elements[®] Magnatite Flat 90E7725Z to meet AAMA 2604 for a Commercial project greater than 3 stories in a exterior Mild (C3) environment. Product must be applied by a Dulux[®] Accredited Powder Coater and must offer a 25 year Durability and 20 year Colour warranty on architectural aluminium.”

Our dedicated consultants can help you by providing the right coating advice together with supplying specifications for your projects. Call 13 24 99 or visit duluxpowders.com.au

* All Dulux Fluoraset products are supported Dulux Alumi Shield and Dulux Steel Shield warranties when applied by a Dulux Accredited Powder Coater to the warranty specification on recommended project types and conditions. For more information visit duluxpowders.com.au/warranties

Premium Product Range

RANGE	COLOUR NAME	FINISH	LOOK	COLORBOND®	PRODUCT CODE	R	G	B	LRV
Duratec Elements	Basalt®	Flat	Textured	CB	90E7723Z	213	213	205	69%
Duratec Elements	Surfmist®	Flat	Textured	CB	90E1330Z	91	93	93	15%
Duratec Elements	Black (CB Night Sky®)	Flat	Textured	CB	90E9190Z	66	67	67	9%
Duratec Elements	Monument®	Flat	Textured	CB	90E7724Z	42	43	43	4%
Duratec Elements	Natural Bronze	Flat	Textured		90E8341Z	88	70	44	14%
Duratec Elements	Weathered Steel	Flat	Textured		90E8340Z	86	51	30	8%
Duratec Elements	Copper Ore	Flat	Textured		90E6413Z	41	56	47	8%
Duratec Elements	Magnetite	Flat	Textured		90E7725Z	47	41	37	7%
Duratec Eternity	Bronze Pearl	Satin	Pearlescent		90T8356Q	82	74	62	10%
Duratec Eternity	Chain Pearl	Matt	Pearlescent		90T7761Q	168	171	168	45%
Duratec Eternity	Charcoal Pearl	Satin	Pearlescent		90T7762Q	55	54	55	6%
Duratec Eternity	Citi Silver Pearl	Matt	Pearlescent		90T7024Q	172	176	179	48%
Duratec Eternity	Copper Metallic Kinetic	Matt	Pearlescent		90T7183K	146	134	124	29%
Duratec Eternity	Linen Pearl	Satin	Pearlescent		90T1138Q	222	219	207	73%
Duratec Eternity	Matt Champagne Kinetic	Matt	Pearlescent		90T3059K	157	151	142	36%
Duratec Eternity	Nickel Pearl	Matt	Pearlescent		90T7763Q	165	158	146	39%
Duratec Eternity	Pewter Pearl	Satin	Pearlescent		90T7764Q	124	129	129	26%
Duratec Eternity	Silver Kinetic Pearl	Satin	Pearlescent		90T7160K	151	154	156	37%
Duratec Eternity	Copper Coin Pearl	Matt	Pearlescent		90T4350Q	147	101	72	20%
Duratec Eternity	Titanium Pearl	Satin	Pearlescent		90T7765Q	89	91	88	14%
Duratec Intensity	Coast	Satin	Bright Solid		90N5233S	13	94	134	13%
Duratec Intensity	Desert	Satin	Bright Solid		90N4227S	139	57	46	12%
Duratec Intensity	Evergreen	Satin	Bright Solid		90N6005S	38	96	62	12%
Duratec Intensity	Flame	Gloss	Bright Solid		90N4007G	180	44	41	14%
Duratec Intensity	Leaf	Satin	Bright Solid		90N6167S	75	137	65	24%
Duratec Intensity	Moonlight	Satin	Bright Solid		90N2004S	238	207	65	66%
Duratec Intensity	Reef	Gloss	Bright Solid		90N5011G	39	105	184	18%
Duratec Intensity	Storm	Satin	Bright Solid		90N5365S	42	51	79	6%
Duratec Intensity	Sunshine	Gloss	Bright Solid		90N2084G	231	171	54	50%
Duratec Zeus	Appliance White	Satin	Solid		90Z1341S	240	244	239	91%
Duratec Zeus	Arctic White	Satin	Solid		90Z1342S	224	232	237	82%
Duratec Zeus	Black	Matt	Solid		90Z9202M	44	44	45	5%
Duratec Zeus	Chalk USA	Gloss	Solid		90Z1343G	239	234	217	84%
Duratec Zeus	Charcoal	Satin	Solid		90Z7766S	60	63	67	8%
Duratec Zeus	Dark Grey	Matt	Solid		90Z7767M	59	64	68	8%
Duratec Zeus	Grey	Satin	Solid		90Z7768S	108	111	114	20%
Duratec Zeus	Lunar Eclipse	Satin	Solid		90Z9203S	45	45	46	5%
Duratec Zeus	Lunar Grey	Matt	Solid		90Z7769M	227	225	216	77%
Duratec Zeus	Matt Canvas Cloth	Matt	Solid		90Z7327M	203	200	189	61%
Duratec Zeus	Monument®	Satin	Solid	CB	90Z7307S	66	67	67	9%
Duratec Zeus	Monument®	Matt	Solid	CB	90Z8189M	66	67	67	9%
Duratec Zeus	Silver Grey	Matt	Solid		90Z7770M	171	175	177	47%
Duratec Zeus	Talc	Satin	Solid		90Z1344S	229	226	216	78%
Duratec Zeus	Timberland	Satin	Solid		90Z7315S	84	84	80	12%
Duratec Zeus	White	Gloss	Solid		90Z1110G	240	244	242	90%
Electro	Basalt®	Flat	Anodised	CB	9067645F	91	93	93	15%
Electro	Black Ace	Flat	Anodised		9069116F	59	60	60	4%
Electro	Blue Gold	Flat	Anodised		9065301K	111	128	122	20%
Electro	Blue Night	Flat	Anodised		9065303K	67	68	71	6%
Electro	Brilliance	Flat	Anodised		9068281K	112	102	90	14%
Electro	Burnished Copper	Flat	Anodised		9068185K	93	75	71	8%
Electro	Dark Bronze	Flat	Anodised		9068184K	77	69	63	6%
Electro	Flat White	Flat	Anodised		9061200F	236	240	237	86%
Electro	Fresh Gold	Flat	Anodised		9062208K	150	131	107	24%
Electro	Gold Pearl	Flat	Anodised		9062221K	167	139	93	28%
Electro	Medium Bronze	Flat	Anodised		9068183K	103	93	80	11%
Electro	Monument®	Flat	Anodised	CB	9069171F	66	67	67	9%
Electro	Sensational Champagne	Flat	Anodised		9063187K	148	138	125	26%
Electro	Silver Reign	Flat	Anodised		9067614K	170	175	173	42%
Electro	Tiberius	Flat	Anodised		9062210K	109	94	65	12%
Electro	Venerable Silver	Flat	Anodised		9067621K	125	127	128	21%
Fluoraset Xtreme™	Black	Matt	Solid		40X9204M	42	42	43	4%
Fluoraset Xtreme™	Charcoal	Matt	Solid		40X7297M	58	61	64	7%
Fluoraset Xtreme™	White	Satin	Solid		40X1157S	231	232	223	82%
Fluoraset Xtreme™	Monument®	Matt	Solid	CB	40X8148M	42	43	43	4%
Fluoraset Xtreme™	Basalt®	Matt	Solid	CB	40X7475M	91	93	93	15%
Fluoraset Xtreme™	Surfmist®	Satin	Solid	CB	40X1182S	213	213	205	69%
Fluoraset Allure™	Champagne	Satin	Pearlescent		40A7302Q	161	158	153	39%
Fluoraset Allure™	Coin	Satin	Pearlescent		40A7289Q	163	167	169	43%
Fluoraset Allure™	Silver	Satin	Pearlescent		40A7273Q	145	149	151	35%

Worth doing, worth Dulux.®

Whatever your project needs, Dulux powder coatings provide you with the confidence and quality that will make it all worthwhile.

Meeting Industry Standards

Dulux Premium Powder Coat Products are designed to meet both the global AAMA and Australian AS3715 standard architectural standards.

	Fluoraset	Electro	Duratec
AAMA Standards	2605	2604	2604
Coating Type	Ultra Durable Fluoropolymer	Super Durable Polyester	Super Durable Polyester

Meeting Project Needs

The following tables can be used to help identify your project and environment needs, and ultimately the product choice you have from this card.

Product Suitability – Aluminium and Steel

Aluminium specifications are typically 1 coat systems, whilst steel specifications are 2-3 coat systems.

Please refer to the table below to clarify:

Project, Environment and Conditions			Primer System		Top Coat Choice		
Project Type	Environment	Conditions	Zincshield	E-Prime	Fluoraset ²	Electro ³	Duratec ³
Monumental	Exterior	Severe or Tropical	○	○*	●		
Monumental	Exterior	Mild	○	○ ¹	●		
Prestigious Commercial	Exterior	Severe or Tropical	○	○*	●		
Prestigious Commercial	Exterior	Mild	○	○ ¹	●	●	●
Commercial	Exterior	Severe or Tropical	○	○*	●	●	●
Commercial	Exterior	Mild	○	○ ¹	●	●	●
Residential	Exterior	Severe or Tropical	○	○*	●	●	●
Residential	Exterior	Mild	○	○ ¹	●	●	●
Non-Habitable	Exterior	Severe or Tropical	○	○*	●	●	●
Non-Habitable	Exterior	Mild	○	○ ¹	●	●	●
All Projects	Interior	Moderate Interior (High)	○	○*	●	●	●
All Projects	Interior	Moderate Interior (Medium)	○	○ ¹	●	●	●
All Projects	Interior	General Interior	○		●	●	●

● Steel Shield and Alumi Shield Warranty available.

○ Primer required for Steel Shield Warranties.

* E-Prime base coat is mandatory for Alumi Shield warranties on perforated and expanded aluminium where indicated.

1. E-Prime base coat is mandatory for 10 Year Steel Shield Corrosion warranties in Mild-Medium (C3) conditions. Without, Steel Shield Corrosion Warranty is 5 Years.

2. Fluoraset may be suitable in locations <10m from the high tide line, e.g. harbours (contact Dulux for advice) and is NOT suitable in strongly acidic environments so PH must be >5.

3. Electro and Duratec are only suitable for coastal environments >10m from the high tide and are NOT suitable in strongly acidic environments so PH must be >5.

- Non-Habitable projects are those that are not dwelling types. Examples can be furniture, bus shelters, statues, signage etc.
- Residential properties up to 3 levels (BCA Class 1 & 10) are typically easy to maintain, given their height and access.
- High-rise projects are less sheltered from neighbouring buildings, raising their exposure and reducing the ease of maintenance.
- All Projects can include monumental, prestigious commercial, commercial and residential of all types (levels).
- Alumi Shield warranties are only available on: architectural aluminium applications, including perforated aluminium and expanded aluminium.
- Steel Shield warranties are only available on: Mild Steel, Bright/Semi Bright Steel, Black Steel and Blue Steel.
- Please refer to a Dulux DuSpec Specification for exact specification – including preparation and blasting requirements.

Conditions

Use the following table which references AS2312.1 and AS3715 to identify the environment, conditions and atmospheric corrosivity categories.

Environment	Conditions	Corrosivity Level and Zone	Former AS/NZ 2312 Category	Mild Steel Corrosion Rate ¹	Example Environments
Exterior	Mild	Low (C2)	B	1.3-25	Arid, urban, inland, city
		Medium (C3)	C	25-50	Industrial, geothermal ² and coastal
	Severe	High (C4)	D	50-80	Sea shore (calm)
		Very High (C5-M, C5-I)	E-M, E-I	80-200	Sea shore (surf), off shore islands ³ and/or heavy industrial
	Tropical*	High (T)	F	80-200	High, humid and monsoonal locations incl. tropical islands ⁴
Interior	General Interior	Very low (C1)	A	<1.3	Dry interiors
		Low (C2)	B	1.3-25	Minor condensation
	Moderate Interior	Medium (C3)	C	25-50	High moisture
		High (C4)	D	50-80	Significant contamination

* Tropical projects – it is recommended to speak to a Dulux Account Manager or call the advice line for all projects in tropical locations.

1. Corrosion rate is for uncoated steel ref AS2312.1.

2. Geothermal environments with a PH >5 and >9. For PH outside this consult Dulux.

3. Offshore islands that are not tropical include Waiheke, Stewart Island, Fraser Island etc.

4. Tropical islands include Australian Islands north of Mackay and Pacific islands such as PNG, Fiji, Samoa, Tonga.

For more information on identifying the right product for your project call 13 24 99 or visit duluxpowders.com.au

Warranted Performance

All Dulux Premium Powder Coat Products are backed by product specific warranties. Below is an overview of the warranties available from Dulux:

	Warranty	Fluoroset	Electro	Duratec
Alumi Shield Warranty	Aluminium Durability	35 Years	25 Years	25 Years
	Aluminium Colour	30 Years	15 Years	20 Years*
Steel Shield Warranty	Steel corrosion	Up to 10 Years	Up to 10 Years	Up to 10 Years
	Steel Colour	30 Years	15 Years	20 Years*

* Excluding Intensity – 15 Years.

Warranties are made up of a Colour warranty (for colour fade and chalking), Durability warranty (film integrity for aluminium only), and Corrosion warranty (for steel only). They are only valid when applied by a Dulux Accredited Powder Coater to the warranty specification on recommended project types and conditions.

For more information visit duluxpowders.com.au/warranties

Care and Maintenance

To ensure the life of your asset is maximised and to comply with Dulux warranty requirements, a simple and regular maintenance program must be implemented and recorded in line with the recommended minimal cleaning periods set out in the Dulux Powders Care and Maintenance Brochure. For more information refer to the Care and Maintenance Brochure visit duluxpowders.com.au/tech-advice

Dulux Accredited Powder Coaters

Only Dulux Accredited Powder Coaters are able to issue our Dulux Alumi Shield and Steel Shield warranties after demonstrating their capability to meet stringent quality conditions and international standards.



For more information visit duluxpowders.com.au/accredited

Custom Colour

This Premium Colour Selector and our Colour Selector offer a range of products and colours that are readily available. If you cannot find the colour you require in a particular product, Dulux offer a Custom Colour service. Call 13 24 99 or visit duluxpowders.com.au

Advice Line

Our dedicated consultants can help simplify the specification process, saving you time and money by providing the right coating advice for your project. Call 13 24 99 or visit duluxpowders.com.au

Offices

Australia

Dulux Powder & Industrial Coatings
1-15 Pound Road West, Dandenong South VIC 3175
T (61) 3 8787 4500

New Zealand

Dulux Powder & Industrial Coatings
31B Hillside Road, Glenfield, Auckland, New Zealand
T (64) 9 441 8244

Singapore

DGL International Powder & Industrial Coatings
No.100 Pasir Panjang Road
#02-10, Singapore 118518
T (65) 6838 1010

China

DGL International Powder & Industrial Coatings
Room 406, No.8, Lane 1977, JinShaJiang Road,
Shanghai, China, PC 200333
T (86) 21 6173 8800

Living Colors





Color Name	Technology	Code	Finish	Color Group	LRV
Almond Ivory	D1000	GD016A	Gloss	Living Series	54%
Anodic Bronze	D1000	GY114A	Satin	Anodic	12%
Anodic Champagne	D1000	GY276A	Matt	Anodic	42%
Anodic Clear	D1000	GY221A	Matt	Anodic	55%
Anodic Dark Grey	D1000	GL213A	Matt	Anodic	7%
Anodic Natural	D1000	GY235A	Matt	Anodic	42%
Anodic Off White	D1000	GD227A	Matt	Anodic	74%
Anodic Silver Grey	D1000	GL237A	Matt	Anodic	48%
APO Grey	D1000	GL107A	Satin	Living Series	46%
Barley	D1000	GD007A	Gloss	Living Series	63%
Black	D1000	GN150A	Satin	Living Series	4%
Black Ink	D1000	GN21BA	Matt	Flat Matt	1%
Black Onyx	D1000	GY042A	Gloss	Living Series	7%
Blaze Blue	TC	MJ034A	Gloss	Color Energy	18%
Bondi Blue	D1000	GJ045A	Gloss	Color Vitality	20%
Bright Silver	610	MW201T	Matt	Silvers & Clears	43%
Bright White	D1000	GA030A	Gloss	Living Series	81%
Brilliant Yellow	D1000	GE087A	Gloss	Color Vitality	66%
Claret	D1000	GG142A	Satin	Living Series	6%
Classic Pearl White	D1000	GA073A	Gloss	Living Series	91%
Coral Black	D1000	GN063A	Gloss	Living Series	4%
Custom Black	D1000	GN248A	Matt	Living Series	4%
Dark Bronze	D1000	GY20BA	Matt	Flat Matt	6%
Deep Pool	TC	MK002A	Satin	Color Energy	20%
Doeskin	D1000	GD188A	Satin	Living Series	44%
Easy Clean Clear	200	UZ607I	Gloss	Silvers & Clears	59%
Excel™ Basalt™	D1000 Excel™	GP108A	Satin	Excel™	13%
Excel™ Basalt™	D1000 Excel™	GP208A	Matt	Excel™	14%
Excel™ Bushland®	D1000 Excel™	GS103A	Satin	Excel™	24%
Excel™ Bushland®	D1000 Excel™	GK203A	Matt	Excel™	25%
Excel™ Charcoal	D1000 Excel™	GL035A	Gloss	Excel™	6%
Excel™ Charcoal	D1000 Excel™	GL180A	Satin	Excel™	7%
Excel™ Classic Cream®	D1000 Excel™	GD245A	Matt	Excel™	67%
Excel™ Classic Cream®	D1000 Excel™	GU145A	Satin	Excel™	67%
Excel™ Cottage Green®	D1000 Excel™	GS174A	Satin	Excel™	10%
Excel™ Cottage Green®	D1000 Excel™	GK274A	Matt	Excel™	11%
Excel™ Cove™	D1000 Excel™	GD274A	Matt	Excel™	29%
Excel™ Deep Ocean®	D1000 Excel™	GJ203A	Matt	Excel™	9%
Excel™ Deep Ocean®	D1000 Excel™	GQ103A	Satin	Excel™	9%
Excel™ Domain®	D1000 Excel™	GD230A	Matt	Excel™	67%
Excel™ Dune®	D1000 Excel™	GP152A	Satin	Excel™	40%

Living Colors

People are driven by emotion – and color elicits different emotions in people. As the world's largest coatings company, no other company has more experience in color trends than AkzoNobel. Home to the Aesthetics Centre, our in-house color and design experts anticipate and predict movements in trends that affect color and coating choices for architectural applications. We have drawn on the knowledge of our global Aesthetics Centre, along with our own Australian insights, to produce this Residential and Industrial Powder Coatings Collection – Living Colors.

Color Name	Technology	Code	Finish	Color Group	LRV
Excel™ Dune®	D1000 Excel™	GL252A	Matt	Excel™	41%
Excel™ Evening Haze®	D1000 Excel™	GM235A	Matt	Excel™	51%
Excel™ Evening Haze®	D1000 Excel™	GT135A	Satin	Excel™	52%
Excel™ Gully™	D1000 Excel™	GM242A	Matt	Excel™	20%
Excel™ Harvest®	D1000 Excel™	GD215A	Matt	Excel™	45%
Excel™ Hawthorn Green	D1000 Excel™	GK030A	Gloss	Excel™	7%
Excel™ Headland®	D1000 Excel™	GV119A	Satin	Excel™	13%
Excel™ Heritage Green	D1000 Excel™	GK044A	Gloss	Excel™	6%
Excel™ Ironstone®	D1000 Excel™	GL236A	Matt	Excel™	11%
Excel™ Ironstone®	D1000 Excel™	GP136A	Satin	Excel™	11%
Excel™ Jasper®	D1000 Excel™	GM214A	Matt	Excel™	15%
Excel™ Jasper®	D1000 Excel™	GT114A	Satin	Excel™	16%
Excel™ Mangrove™	D1000 Excel™	GK277A	Matt	Excel™	17%
Excel™ Manor Red®	D1000 Excel™	GG262A	Matt	Excel™	9%
Excel™ Manor Red®	D1000 Excel™	GV162A	Satin	Excel™	9%
Excel™ Monument®	D1000 Excel™	GL229A	Matt	Excel™	8%
Excel™ Monument®	D1000 Excel™	GP129A	Satin	Excel™	8%
Excel™ Night Sky®	D1000 Excel™	GN231A	Matt	Excel™	4%
Excel™ Night Sky®	D1000 Excel™	GN121A	Satin	Excel™	4%
Excel™ Pale Eucalypt®	D1000 Excel™	GS136A	Satin	Excel™	24%
Excel™ Pale Eucalypt®	D1000 Excel™	GK236A	Matt	Excel™	25%
Excel™ Paperbark®	D1000 Excel™	GD214A	Matt	Excel™	50%
Excel™ Paperbark®	D1000 Excel™	GU114A	Satin	Excel™	50%
Excel™ Pearl White®	D1000 Excel™	GA029A	Gloss	Excel™	89%
Excel™ Primrose	D1000 Excel™	GD031A	Gloss	Excel™	72%
Excel™ Riversand®	D1000 Excel™	GM204A	Matt	Excel™	33%
Excel™ Shale Grey®	D1000 Excel™	GL284A	Matt	Excel™	49%
Excel™ Shale Grey®	D1000 Excel™	GP184A	Satin	Excel™	49%
Excel™ Surfmist®	D1000 Excel™	GB136A	Satin	Excel™	66%
Excel™ Surfmist®	D1000 Excel™	GA236A	Matt	Excel™	69%
Excel™ Terrain™	D1000 Excel™	GM143A	Satin	Excel™	10%
Excel™ Terrain™	D1000 Excel™	GM243A	Matt	Excel™	9%
Excel™ Wallaby™	D1000 Excel™	GL111A	Satin	Excel™	18%
Excel™ Wallaby™	D1000 Excel™	GL210A	Matt	Excel™	18%
Excel™ Wilderness®	D1000 Excel™	GS189A	Satin	Excel™	18%
Excel™ Wilderness®	D1000 Excel™	GK289A	Matt	Excel™	19%
Excel™ Windspray®	D1000 Excel™	GP166A	Satin	Excel™	27%
Excel™ Windspray®	D1000 Excel™	GL266A	Matt	Excel™	28%
Excel™ Woodland Grey®	D1000 Excel™	GL205A	Matt	Excel™	12%
Excel™ Woodland Grey®	D1000 Excel™	GP105A	Satin	Excel™	12%

The Interpon Range

Interpon TC

Interpon TC is a durable powder coating designed to meet the specific needs of the Industrial and General Trade Coater markets. The Interpon TC range of powder coatings feature higher transfer efficiency, excellent coverage and high levels of damage resistance. Interpon TC is available in an extensive range of brighter colors, ripples, textures, and special effect powders.

Interpon D1000

Interpon D1000 is a high durable powder coating developed on in-house resin technology providing an ideal finish for all external applications. **Interpon D1000** offers the applicator excellent application performance with superior mileage, high powder utilisation and faster curing, making it the most versatile and best performing product in its class.



Color Name	Technology	Code	Finish	Color Group	LRV
Flame Red	TC	MG071A	Gloss	Color Energy	11%
French Blue	TC	MJ067A	Gloss	Color Energy	13%
Hammersley Brown	D1000	GM100A	Satin	Living Series	8%
Hammer Mystique	TC	MW415C	Texture	Ripple	13%
Jaybird	D1000	GJ174A	Satin	Color Vitality	11%
Lawn Green	TC	MK038A	Gloss	Color Energy	12%
Lemon Yellow	TC	ME068A	Gloss	Color Energy	66%
Lobster	D1000	GG155A	Satin	Color Vitality	12%
Lycra Strip	D1000	GK063A	Gloss	Color Vitality	53%
Magnolia	D1000	GD025A	Gloss	Living Series	63%
MetaPrep™ Grey	700	EL286A		Primer	47%
Natural Shimmer	D1000	GY21AA	Matt	Flat Matt	46%
Notre Dame	D1000	GL040A	Gloss	Living Series	16%
Off White	D1000	GA211A	Matt	Living Series	71%
Olde Pewter	D1000	GL175A	Satin	Living Series	20%
Orange X15	TC	MF035A	Gloss	Color Energy	28%
Oyster Grey	D1000	GL258A	Matt	Living Series	60%
Pearl White	D1000	GA078A	Gloss	Living Series	89%
Pottery	D1000	GM175A	Satin	Living Series	39%
Primrose	D1000	GD037A	Gloss	Living Series	70%
PZ560 Zinc	100	BL103K	Primer	Primer	13%
PZ790	100	ALZ90F	Primer	Primer	15%
Ripple APO Grey	TC	ML463A	Gloss	Ripple	43%
Ripple Black	TC	MN427A	Gloss	Ripple	4%
Ripple Graphite	700	EY422A	Matt	Ripple	10%
Ripple RAL 7032	TC	MP476A	Texture	Ripple	44%
Ripple RAL 7035	TC	ML435A	Gloss	Ripple	58%
Ripple White	TC	MA494A	Gloss	Ripple	92%
Ripple X15 Orange	TC	MF406A	Gloss	Ripple	29%
Rivergum	D1000	GD042A	Gloss	Living Series	65%
Sablé™ Asteroid	D1000	GN271A	Texture	Sablé™	11%
Sablé™ Bass	D1000	GN297A	Texture	Sablé™	9%
Sablé™ Black	D1000	GN341A	Texture	Sablé™	4%
Sablé™ Brilliance	D1000	GL277A	Texture	Sablé™	16%
Sablé™ Core Ten	D1000	GX350A	Texture	Sablé™	8%
Sablé™ Grey Nurse	D1000	GL320A	Texture	Sablé™	58%

Color Name	Technology	Code	Finish	Color Group	LRV
Sablé™ Silver	D1000	GY301A	Texture	Sablé™	39%
Safety Yellow	TC	ME096A	Gloss	Color Energy	45%
Safety Yellow	TC	ME396A	Texture	Color Energy	43%
Sensation	D1000	GF049A	Gloss	Color Vitality	75%
Shamrock	D1000	GK043A	Gloss	Color Vitality	13%
Shoji White	D1000	GA160A	Satin	Living Series	78%
Signal Red	TC	MG036A	Gloss	Color Energy	13%
Space Blue	TC	MJ008A	Gloss	Color Energy	7%
Stone Beige	D1000	GD247A	Matt	Living Series	47%
Storm Grey N42	D1000	GL060A	Satin	Living Series	30%
Textura® White	D1000	GA330A	Texture	Textura®	87%
Textura® Surfmist®	D1000	GA336A	Texture	Textura®	67%
Textura® Primrose	D1000	GD331A	Texture	Textura®	69%
Textura® Paperbark®	D1000	GD314A	Texture	Textura®	52%
Textura® Dune®	D1000	GL352A	Texture	Textura®	58%
Textura® Silver	D1000	GY35LA	Texture	Textura®	38%
Textura® Ironstone®	D1000	GL336A	Texture	Textura®	11%
Textura® Deep Ocean®	D1000	GJ301A	Texture	Textura®	9%
Textura® Jasper®	D1000	GM314A	Texture	Textura®	15%
Textura® Woodland Grey®	D1000	GL333A	Texture	Textura®	12%
Textura® Monument®	D1000	GL329A	Texture	Textura®	8%
Textura® Black	D1000	GN305A	Texture	Textura®	5%
Transformer Grey	D1000	GL031A	Gloss	Living Series	30%
Viper Green	D1000	GK051A	Gloss	Color Vitality	27%
Vivica™ Asteroid Pearl	D1000	GY270A	Matt	Vivica™	10%
Vivica™ Charcoal Metallic	D1000	GM019A	Gloss	Vivica™	7%
Vivica™ Charcoal Pearl	D1000	GY237A	Matt	Vivica™	6%
Vivica™ Cit®	D1000	GL211A	Matt	Vivica™	44%
Vivica™ Mercury Silver	D1000	GW003K	Gloss	Vivica™	51%
Vivica™ Nobel Silver Pearl	D1000	GY119A	Satin	Vivica™	31%
Vivica™ Palladium Silver Pearl	D1000	GY184C	Satin	Vivica™	30%
Vivica™ Storm Front	D1000	GL249A	Matt	Vivica™	13%
Vivica™ Ultra Silver	D1000	GY070A	Gloss	Vivica™	41%
White	D1000	GA124A	Satin	Living Series	89%
White Birch	D1000	GA057A	Gloss	Living Series	85%
Yellow Gold	TC	ME038A	Gloss	Color Energy	52%

Colorbond® and ® color names are registered trademarks of BlueScope Steel Limited

Interpon D1000 Excel™

Interpon D1000 Excel™ has been developed for application over porous substrates, such as hot-dipped galvanised (HDG) steel and castings, providing greater application tolerance and improved final film appearance. **Interpon D1000 Excel™** is also suitable for aluminium and steel substrates.

Interpon D Approved Applicators

AkzoNobel has developed the Interpon D Approved Applicators Network to support the Interpon D Global Warranty Program. This program is designed to ensure the Interpon powder coating you choose is applied correctly, meeting Interpon Powder Coatings warranty requirements to local and international standards. To view all Interpon D Approved Applicators please visit www.specifyinterpon.com.au.

For more information or to become an Interpon D approved applicator please speak with your Interpon technical representative.

Color Freedom

AkzoNobel values the importance of color and finish in your design and understands that color expression is an extension of your project. Why not take advantage of our made-to-order color service. For smaller projects down to 20kg, **Interpon MiniB™** and **Interpon MiniB™ Micro** provides fast service on small batch made-to-order colors that are specific to your needs. Some conditions do apply such as choice of color and product. Please contact the Interpon Customer Care Team for additional advice.

How to Specify Interpon Powder Coatings

Once you have chosen **Interpon** Powder Coatings for your project, it's important to use the correct product. So we make specifying **Interpon** powder coatings easy. Simply:

- a.** Nominate the **Interpon** product. e.g. **Interpon D1000**.
- b.** Nominate the color, finish and product code. e.g. Anodic Natural Matt GY235A.

To find your nearest **Interpon** applicator, please contact your **Interpon** representative or the **Interpon** Customer Care Team.

Exterior Durable Color Range

Interpon Excel™

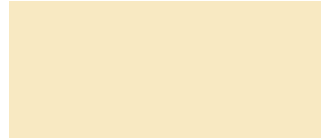
Degassing technology provides smoother films over porous substrates. Features COLORBOND® steel standard color range.



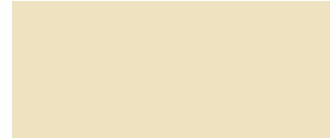
Excel™ Pearl White®
Gloss GA029A



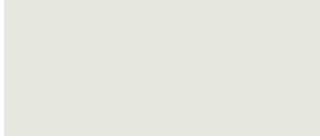
Excel™ Domain®
Matt GD230A



Excel™ Primrose
Gloss GD031A



Excel™ Classic Cream®
Matt GD245A [Satin](#) GU145A



Excel™ Surfmist®
Matt GA236A [Satin](#) GB136A



Excel™ Evening Haze®
Matt GM235A [Satin](#) GT135A



Excel™ Shale Grey®
Matt GL284A [Satin](#) GP184A



Excel™ Dune®
Matt GL252A [Satin](#) GP152A



Excel™ Harvest®
Matt GD215A



Excel™ Paperbark®
Matt GD214A [Satin](#) GU114A



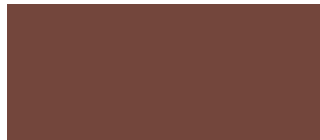
Excel™ Gully™
Matt GM242A



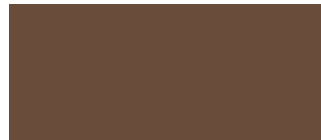
Excel™ Jasper®
Matt GM214A [Satin](#) GT114A



Excel™ Headland®
[Satin](#) GV119A



Excel™ Manor Red®
Matt GG262A [Satin](#) GV162A



Excel™ Terrain™
Matt GM243A [Satin](#) GM143A



Excel™ Woodland Grey®
Matt GL205A [Satin](#) GP105A



Excel™ Riversand®
Matt GM204A



Excel™ Windspray®
Matt GL266A [Satin](#) GP166A



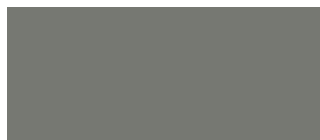
Excel™ Basalt™
Matt GP208A [Satin](#) GP108A



Excel™ Ironstone®
Matt GL236A [Satin](#) GP136A



Excel™ Bushland®
Matt GK203A [Satin](#) GS103A



Excel™ Wallaby™
Matt GL210A [Satin](#) GL111A



Excel™ Deep Ocean®
Matt GJ203A [Satin](#) GQ103A



Excel™ Monument®
Matt GL229A [Satin](#) GP129A



Excel™ Cove™
Matt GD274A



Excel™ Pale Eucalypt®
Matt GK236A [Satin](#) GS136A



Excel™ Wilderness®
Matt GK289A [Satin](#) GS189A



Excel™ Mangrove™
Matt GK277A



Excel™ Cottage Green®
Matt GK274A [Satin](#) GS174A



Excel™ Hawthorn Green
Gloss GK030A



Excel™ Heritage Green
Gloss GK044A



Excel™ Charcoal
Gloss GL035A [Satin](#) GL180A



Excel™ Night Sky®
Matt GN231A [Satin](#) GN121A

Interpon Flat Matt

Interpon's next generation smooth low gloss 'anodised look' powder coatings.



Natural Shimmer
Flat Matt GY21AA



Dark Bronze
Flat Matt GY20BA



Black Ink
Flat Matt GN21BA

Interpon Living Series

A classic range of local favourites in subtle and neutral shades.



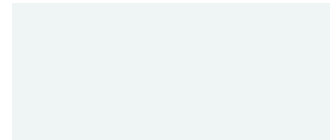
Bright White
Gloss GA030A



White Satin
Satin GA124A



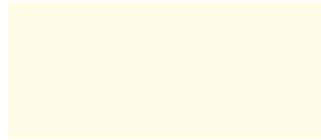
Pearl White
Gloss GA078A



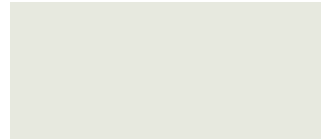
Classic Pearl White
Gloss GA073A



Shoji White
Satin GA160A



White Birch
Gloss GA057A



Off White
Matt GA211A



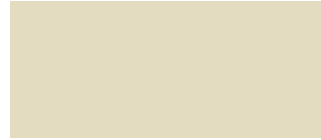
Oyster Grey
Matt GL258A



APO Grey
Satin GL107A



Primrose
Gloss GD037A



Magnolia
Gloss GD025A



Almond Ivory
Gloss GD016A



Doeskin
Satin GD188A



Rivergum
Gloss GD042A



Barley
Gloss GD007A



Stone Beige
Matt GD247A



Pottery
Satin GM175A



Storm Grey N42
Gloss GL060A



Olde Pewter
Satin GL175A



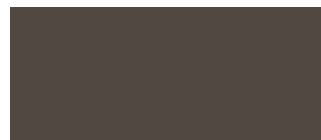
Claret
Satin GG142A



Transformer Grey
Gloss GL031A



Notre Dame
Gloss GL040A



Hammersley Brown
Satin GM100A



Coral Black
Gloss GN063A



Custom Black
Matt GN248A



Black Satin
Satin GN150A

Interpon Vivica™ A soft metallic finish, providing luxury and richness with its timeless pearlescent lustre.



Vivica™ Mercury Silver
Gloss GW003K



Vivica™ Citi®
Matt GL211A



Vivica™ Ultra Silver
Gloss GY070A



Vivica™ Nobel Silver Pearl
Satin GY119A



Vivica™ Palladium Silver Pearl
Satin GY184C



Vivica™ Asteroid Pearl
Matt GY270A



Vivica™ Storm Front
Matt GL249A



Vivica™ Black Onyx
Gloss GY042A



Vivica™ Charcoal Pearl
Matt GY237A



Vivica™ Charcoal Metallic
Gloss GM019A

Interpon Color Vitality

Bright, vibrant and **UV stable**, perfect for providing a dramatic visual.



Brilliant Yellow
Gloss GE087A



Lydra Strip
Gloss GK063A



Sensation
Gloss GF049A



Lobster
Satin GG155A



Viper Green
Gloss GK051A



Shamrock Green
Gloss GK043A



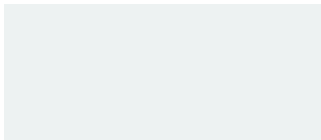
Bondi Blue
Gloss GJ045A



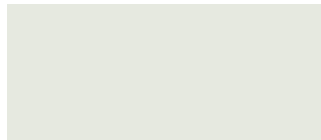
Jaybird
Satin GJ174A

Interpon Textura®

Unique fine texture finish designed to reduce marring and scuffing.



Textura® White
Texture GA330A



Textura® Surfmist
Texture GA336A



Textura® Primrose
Texture GD331A



Textura® Paperbark
Texture GD314A



Textura® Dune
Texture GL352A



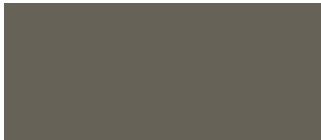
Textura® Silver
Texture GY35LA



Textura® Ironstone
Texture GL336A



Textura® Deep Ocean
Texture GJ301A



Textura® Jasper
Texture GM314A



Textura® Woodland Grey
Texture GL333A



Textura® Monument
Texture GL329A



Textura® Black
Texture GN305A

Interpon Anodic

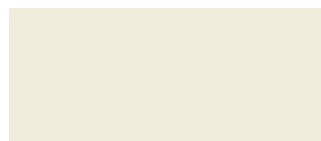
Soft metallic tones, ideal when seeking alternative coatings to anodising.



Anodic Natural
Matt GY235A



Anodic Clear
Matt GY221A



Anodic Off White
Matt GD227A



Anodic Silver Grey
Matt GL237A



Anodic Champagne
Matt GY276A



Anodic Bronze
Satin GY114A



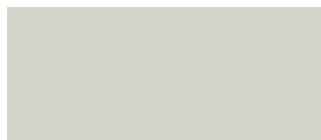
Anodic Dark Grey
Matt GL213A

Interpon Sablé™

A novel sandy appearance offering enhanced surface scuff resistance.



Sablé™ Asteroid
Texture GN271A



Sablé™ Grey Nurse
Texture GL320A



Sablé™ Silver
Texture GY301A



Sablé™ Brilliance
Texture GL277A



Sablé™ Core Ten
Texture GX350A



Sablé™ Bass
Texture GN297A



Sablé™ Black
Texture GN341A

Interior Color Range

Interpon Color Energy

A collection of striking colors to accent modern features.



Lemon Yellow
Gloss ME068A  



Flame Red
Gloss MG071A  



Blaze Blue
Gloss MJ034A  



Orange X15
Gloss MF035A  



Yellow Gold
Gloss ME038A  



Signal Red
Gloss MG036A  



French Blue
Gloss MJ067A  



Deep Pool
Satin MK002A  



Safety Yellow
Gloss ME096A  



Safety Yellow
Texture ME396A  



Space Blue
Gloss MJ008A  



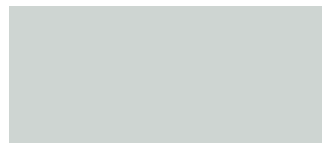
Lawn Green
Gloss MK038A  

Interpon Ripple

A distinctive course texture effect which also allows masking of substrate surface defects.



Ripple White
Gloss MA494A 



Ripple RAL 7035
Gloss ML435A 



Ripple APO Grey
Gloss ML463A 



Ripple Graphite
Matt EY422A 



Ripple X15 Orange
Gloss MF406A  



Ripple RAL 7032
Gloss MP476A 



Ripple Black
Gloss MN427A 



Hammer Mystique
Gloss MW415C  

Interpon Protective Primer

Cost effective substrate protection. Interpon top-coat required to complete the system.



PZ560 Zinc
Primer BL103K



PZ790
Primer ALZ90F



MetaPrep™ Grey
Primer EL286A



Bright Silver
Matt MW201T 

Interpon Clears



Easy Clean Clear
Gloss UZ607I



Not recommended for use where high UV exposure is likely



For internal use only



For General Industrial Range



Are recommended to be over coated with Interpon 810 Clear powder coating for exterior use or aggressive internal applications

AUSTRALIA

e: salesoz@interpon.com
 Tel: 1800 630 516
 Fax: 1800 650 786



green building council australia
 MEMBER 2017-2018

S-P-00692 EPD®
 environdec.com

www.interpon.com.au
www.specifyinterpon.com.au

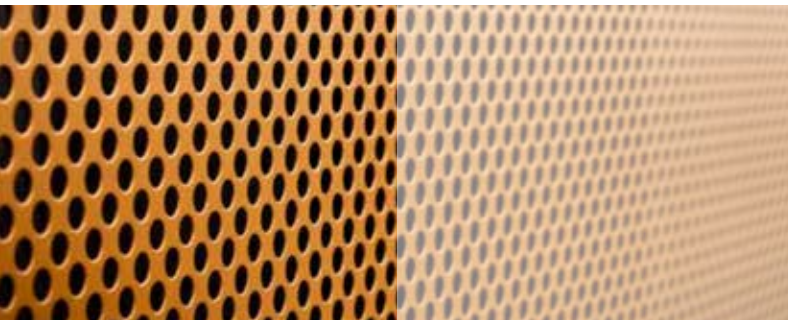
EPD logo applies to D1000 and D1000 Excel™ only

Care and Maintenance

Maintaining the integrity of your powder coated products is just like caring for your car – and is a smart way to protect your investment. Over time with exposure to the elements, powder coatings may show signs of weathering such as loss of gloss, chalking and slight color change. A simple regular clean will minimise the effects of weathering and will remove dirt, grime and other build-up detrimental to all powder coatings. The best method of cleaning is by regular washing of the coating using a solution of warm water and nonabrasive, pH neutral detergent solution. Surfaces should be thoroughly rinsed after cleaning to remove all residues. All surfaces should be cleaned using a soft cloth, sponge or a soft natural bristle brush.

Category (AS4312)	Corrosivity Level	Environment Type	Required Cleaning*
C1 & C2	Very Low & Low	Non-hazardous Environment	Every 12 months
C3/T	Medium	Tropical Environment	Every 12 months
C4	High	Swimming Pools / Light Industrial	Every 6 months
C4	High	Coastal Environment	Every 6 months
C5-M	Very High	Beach Front / Marine	Every 3 months
C5-I	Very High	Heavy Industrial Environment	Every 3 months

*Refer Interpon Powder Coatings – Care and Maintenance sheet for further details.



Disclaimer

Unless otherwise agreed by us in writing, any contract to purchase products referred to in this color card and any advice that we give in connection with the supply of products are subject to our standard conditions of sale. Typical end uses for Interpon products are displayed in this publication using actual projects and representative images.

AkzoNobel endeavours to ensure the information contained in this publication is correct at the time of printing. All products referred to and any technical advice provided is subject to the standard terms and conditions of sale of the AkzoNobel supplying company.

Interpon® and Textura® are registered trademarks of AkzoNobel Pty Ltd. Sablé,™ MiniB,™ Vivica,™ Excel™ and MetaPrep™ are trademarks of AkzoNobel Pty Ltd. COLORBOND® and ® color names are registered trademarks of BlueScope Steel Limited.™ color names are trademarks of BlueScope Steel Limited. Over time performance may vary between COLORBOND™ steel and Interpon Powder Coatings due to the different paint technologies used.
 © Copyright 2017 AkzoNobel Pty Limited ABN 59 000 119 424. Printed February 2018. 00054_050218



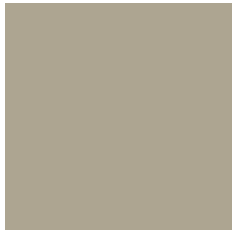
Interpon D2015: Ultriva™ Commercial Collection



Stock Colors

Contemporary Metro

Time tested and urban neutral; subtle hues complement the design nature of the modern day metropolis with understated pearl finishes and contemporary tones.



Luxe Bronze Pearl
Matt YY255A ■
RGB 173, 164, 144 LRV 36%



Précis™ Pure Gold
Matt YY22BA
RGB 169, 141, 95 LRV 27%



Précis™ Dark Bronze
Matt YY20BA
RGB 67, 65, 56 LRV 6%



Précis™ Black Ink
Matt YN21BA
RGB 48, 53, 51 LRV 4%



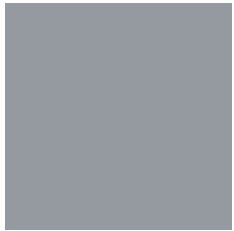
Monument®
Matt YL264A ■
RGB 62, 59, 56 LRV 8%



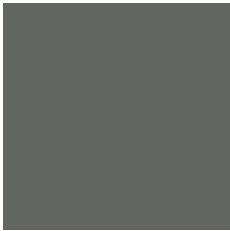
Bronze Pearl
Matt YY225A
RGB 77, 71, 56 LRV 8%



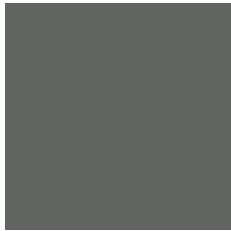
Sablé™ Medium Bronze
Texture YY366A
RGB 84, 80, 64 LRV 9%



Eternal Silver
Satin YW100C
RGB 149, 154, 161 LRV 30%



Sablé™ Brilliance
Texture YY377A
RGB 98, 102, 99 LRV 15%



Titanium Pearl
Matt YY263A ■
RGB 97, 101, 96 LRV 13%



Asteroid Pearl
Matt YY270A ■
RGB 91, 92, 84 LRV 11%



Sablé™ Bass
Texture YY397A
RGB 70, 77, 74 LRV 8%



Charcoal
Matt YL238A ■
RGB 60, 67, 69 LRV 6%



Charcoal Pearl
Matt YY237A ■
RGB 63, 65, 62 LRV 6%



Citi® Pearl
Matt YY245A ■
RGB 180, 184, 180 LRV 43%



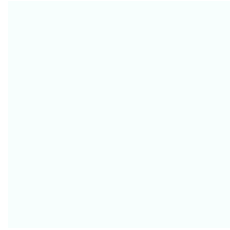
Champagne Pearl
Matt YY276A ■
RGB 178, 180, 172 LRV 41%



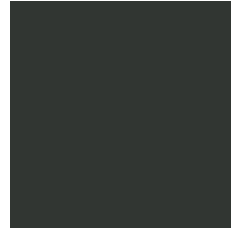
Anodic Natural
Matt YY223A ■
RGB 175, 180, 175 LRV 41%



Précis™ Natural Shimmer
Matt YY25AA
RGB 186, 190, 189 LRV 46%



Pearl White
Matt YA278A ■
RGB 249, 255, 255 LRV 89%



Ebony
Matt YN201A ■
RGB 49, 54, 51 LRV 4%



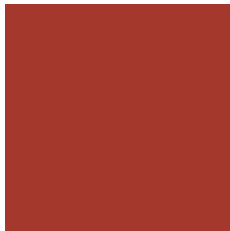
Sablé™ Core Ten™
Texture YX350A
RGB 87, 68, 55 LRV 7%



Stock Colors

Color Vitality

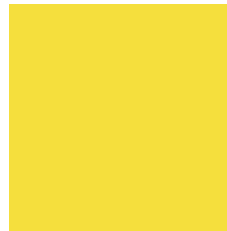
An effervescent range saturated with color, each vying to make a splash on our cities. A search for color, life and glamorous performance to provide a refreshing addition to an ordinary day.



Lobster
Satin YG154A
RGB 165, 56, 45 LRV 12%



Sensation
Gloss YF049A
RGB 222, 106, 49 LRV 75%



Brilliant Yellow
Gloss YE087A
RGB 245, 223, 61 LRV 66%



Lycra Strip
Gloss YK063A
RGB 200, 217, 84 LRV 53%



Bondi Blue
Gloss YJ046A
RGB 48, 131, 193 LRV 20%



Jaybird
Satin YJ175A
RGB 27, 97, 147 LRV 11%



Viper Green
Gloss YK051A
RGB 104, 160, 72 LRV 27%



Shamrock
Gloss YK043A
RGB 71, 110, 64 LRV 13%



AAMA2604-13

Global Warranty


Interpon D architectural powder coatings are performance guaranteed with a full global warranty when applied to aluminum by an Interpon D Approved Applicator.

Interpon D Approved Applicators are assessed and selected on our extensive evaluation process ensuring the most stringent criteria is met to guarantee the application of our powder coatings are in accordance with global industry standards.

Interpon D2015 Ultriva features guaranteed 20 Years film performance and 15 Years color retention ensuring your project maintains it's aesthetic and functional value.

For a complete list of Interpon D Approved Applicators contact the Interpon Customer Care Team or go to www.interpon.com.au for Australian Approved Applicators or www.interpon.co.nz for New Zealand Approved Applicators.

Colors displayed on this color card are a guide only. We recommend that you use production line prepared samples for final color selection or approval.

 Color is available in D3020 technology



AUSTRALIA
e: salesoz@interpon.com
www.interpon.com.au
www.specifyinterpon.com.au

NEW ZEALAND
e: salesnz@interpon.com
www.interpon.co.nz

Tel: 1800 630 516
Fax: 1800 650 786

Tel: 0800 150 527
Fax: 0800 809 679



Interpon D2015 Ultriva: Ultra durable performance for all architectural projects

Whether making a statement with color, searching for quality, or satisfying durability requirements **Interpon D2015 Ultriva** meets the needs of the most demanding projects. Developed specifically for architectural components the range is ideal for both exterior and interior aluminum applications from curtain wall extrusions to balustrades and louver systems.

Providing ultra protection from the elements the range exceeds global weathering standard AAMA2604-13, guaranteeing excellent color retention and high resistance to chalking. Exceptional endurance to environmental stressors including high levels of UV radiation, humidity, heavy pollutants and extreme temperatures are achieved through ultra durable polymer technology engineered to withstand the weathering extremes of Australia and New Zealand.

Guaranteed up to 20 Years Gold Global Warranty* the **Interpon D2015 Ultriva** range is perfect for pre-formed aluminum components such as curtain wall extrusions and panels, window and door systems, balustrades, exterior lighting fixtures, fencing and other aluminum sections.

Custom Made Colors: Guaranteeing your color freedom

Featuring pearl, metallic, textured, matt, and high gloss finishes this collection aims to inspire your world of color without limitation.

Once you've found the perfect color take advantage of our industry leading color match service. Capable of matching nearly every conceivable color from almost any source, Akzo Nobel offers a rapid service, ensuring the right color for your project, fast.

Furthermore, no project is too small for our capability with both custom and ex-stock colors available in quantities as small as 20kg (coats approximately 140m²) available through our **MiniB™** and **MiniB Micro** services.

To place your order for a custom made color, contact our Customer Service Centre on 1800 630 516.

Sustainability

Our entire range of Interpon D architectural powder coatings produce minimal product waste, low emissions and contain no volatile organic compounds (VOC's) or toxic heavy metals.

Solvent free and recyclable, our powder coatings offer an environmentally sustainable and cost effective option to alternatives such as liquid paints.

GBCA Green Star Credits

Our complete Interpon D range of architectural powder coatings are eligible for several GBCA green star credits, please consult the applicable product technical datasheet or contact the Interpon Customer Care team for more details.

Upgrade to Interpon D3020 Fluoromax®

When unparalleled premium performance is a must for your project, Interpon D3020 Fluoromax based on Fluorocarbon technology is the product of choice. Meeting AAMA2605-13 specification Interpon D3020 Fluoromax offers premium color and gloss retention with superior weathering performance. A viable cost effective and environmentally conscious alternative to liquid fluorocarbon paints can be achieved without compromise.

How to Specify Interpon Powder Coatings

Once you have chosen Interpon Powder Coatings, it's important to specify the correct product. We make specifying our powder coatings easy, simply:

1. Nominate the Interpon product, e.g. Interpon D2015 Ultriva
2. Nominate the color, finish and product code, e.g. Charcoal Pearl Matt YY237A

Please contact the Interpon Customer Care Team for additional specification support and advice.

Interpon®

AkzoNobel endeavours to ensure the information contained in this publication is correct at the time of printing. All products referred to and any technical advice provided is subject to the standard terms and conditions of sale of the AkzoNobel supplying company.

* Warranty applies only to aluminum when coated by an Interpon D Approved Applicator. Terms and conditions apply. Contact your Interpon representative for further details.

Interpon® and Fluoromax® are registered trademarks of AkzoNobel International BV. Precis™, Ultriva™, Sablé™, Core Ten™, and MiniB™ are trademarks of AkzoNobel Pty Limited

Copyright©2016 Akzo Nobel Powder Coatings Ltd. Interpon is a registered trademark of AkzoNobel. Issue 2 – 12/2016. Printed in New Zealand